

DEPARTMENT OF THE ARMY TECHNICAL MANUAL

**ORGANIZATIONAL, DIRECT SUPPORT, AND GENERAL
SUPPORT MAINTENANCE REPAIR PARTS AND SPECIAL
TOOLS LISTS (INCLUDING DEPOT MAINTENANCE
REPAIR PARTS AND SPECIAL TOOLS)
TOWERS AB-127A/FR, AB-127B/FR, AB-127C/FR,
AND AB-127D/FR
FSN 5985-223-6202**

Department of the Army, Washington, D.C.
19 April 1974

Current as of October 1973

SECTION	Paragraph	P a g e
I. INTRODUCTION		
SCOPE	1-1	2
General	1-2	2
Explanation of columns	1-3	2
Special information	1-4	4
Location Of repair parts	1-5	4
Abbreviations (Not applicable)	1-6	5
Reporting of equipment publication improvements	1-7	5
II. Prescribed LOAD ALLOWANCE (Not applicable)		
III. REPAIR PARTS LIST		6
IV. SPECIAL TOOLS, TEST AND SUPPORT EQUIPMENT (Not applicable)		
V. REPAIR PARTS LIST		7
VI. SPECIAL TOOLS, TEST AND SUPPORT EQUIPMENT (Not applicable)		
VII. INDEX - FEDERAL STOCK NUMBER AND REFERENCE NUMBER CROSS-REFERENCE TO FIGURE AND ITEM NUMBER		9

*This manual supersedes TM 11-5985-211-15P, 12 March 1969.

SECTION I INTRODUCTION

1-1. scope

This manual lists repair parts and special tools required for the performance of organizational, direct support, general support, and depot maintenance of the AB-127A/FR, AB-127B/FR, AB-127C/FR, and AB-127D/FR. The PCCN for the equipment is GCRAGN for all models.

1-2. General

This repair parts and special tools list is divided into the following sections:

- a. Prescribed Load Allowance (PLA) - Section II. Not applicable.
- b. Repair Parts List - Section III. A list of repair parts authorized for the performance of maintenance at the organizational level. This repair parts list is arranged in alphabetical order,
- c. Special Tools, Test and Support Equipment - Section IV. Not applicable.
- d. Repair Parts List - Section V. A list of repair parts authorized for the performance of maintenance at the direct support, general support, and depot level.
- e. Special Tools, Test and Support Equipment - Section VI. Not applicable.
- f. Index - Federal Stock Number and Reference Number Cross-Reference to Figure and Item Number - Section VII. A list, in ascending numerical sequence, of all Federal stock numbers appearing in the listings, followed by a list, in alphameric sequence, of all reference numbers appearing in the listings. Federal stock number and reference numbers are cross-referenced to each illustration figure and item number or reference designation appearance.

1-3. Explanation of Columns

The following provides an explanation of columns found in the tabular list.

a. Source, Maintenance, and Recoverability Codes (SMR).

(1)Source code. Indicates the manner of acquiring support items for maintenance, repair, or overhaul of end items. Source codes are -

Explanation

- PA- Item procured and stocked for anticipated or known usage.
- P B - Item procured and stocked for insurance purposes because essentiality dictates that a minimum quantity be available in the supply systems.

Code	Explanation
PC-	Item procured and stocked and which otherwise would be coded PA except that it is deteriorative in nature.
PD-	Support item, excluding support equipment, procured for initial issue or outfitting and stocked only for subsequent or additional initial issues or outfittings. Not subject to automatic replenishment.
PE-	Support equipment procured and stocked for initial issue or outfitting to specified maintenance repair activities.
P F -	Support equipment which will not be stocked but which will be centrally procured on demand.
P G -	Item procured and stocked to provide for sustained support for the life of the equipment. It is applied to an item peculiar to the equipment which because of probable discontinuance or shutdown of production facilities would prove uneconomical to reproduce at a later time.
KD-	An item of depot overhaul/repair kit and not purchased separately. Depot kit defined as a kit that provides items required at the time of overhaul or repair.
KF-	An item of a maintenance kit and not purchased separately. Maintenance kit defined as a kit that provides an item that can be replaced at organizational or direct support or general support levels of maintenance.
KB-	Item included in both a depot overhaul/repair kit and a maintenance kit.
MO-	Item to be manufactured or fabricated at organizational level.
MF-	Item to be manufactured or fabricated at direct support maintenance level.
MH-	Item to be manufactured or fabricated at general support maintenance level.
MD-	Item to be manufactured or fabricated at depot maintenance level.
AO-	Item to be assembled at organizational level.
AF-	Item to be assembled at direct support maintenance level.
AH-	Item to be assembled at general support maintenance level.
AD-	Item to be assembled at depot maintenance level.
X A -	Item is not procured or stocked because the requirements for the item will result in

Code	Explanation
	the replacement of the next higher assembly.
XB-	Item is not procured or stocked. If not available through salvage, requisition.
XC-	Installation drawing, diagram instruction sheet, field service drawing, that is identified by manufacturers' part number.
XD-	Support items can be requisitioned with justification.

NOTE

Cannibalization or salvage may be used as a source of supply for any items source coded above except those coded XA and aircraft support items as restricted by AR 700-42.

(2) **Maintenance code.** Maintenance codes are assigned to indicate the levels of maintenance authorized to USE and REPAIR support items. The maintenance codes are entered in the third and fourth positions of the Uniform SMR Code Format as follows-

(a) Use (**third position**). The maintenance code entered in the third position indicates the lowest maintenance level authorized to remove, replace, and use the support item. The maintenance code entered in the third position indicates one of the following levels of maintenance.

Code	Application/Explanation
O-	Support item is removed, replaced, used at the organizational level of maintenance.
	NOTE
	A code "C" may be used in this position to denote crew or operator maintenance performed within organizational maintenances.
F-	Support item is removed, replaced, used at the direct support maintenance level.
H-	Support item is removed, replaced, used at the general support maintenance.
D-	Support items that are removed, replaced, used at depot only.

(b) **Repair (fourth position).** The maintenance code entered in the fourth position indicates whether the item is to be repaired and identifies the lowest maintenance level with the capability to perform complete repair (etc, all authorized maintenance functions). W 57 maintenance code is not used a dash (-) sig.. is entered. For a multi-service equipment/systems or when a code is entered, this position will contain one of the following maintenance codes as assigned by the service(s) that require the code-

Code	Application/Explanation
O -	The lowest maintenance level capable of complete repair of the support item is the organizational level.
F -	The lowest maintenance level capable of complete repair of the support item is direct support.
K -	The lowest maintenance level capable of complete repair of the support item is general support.
D -	The lowest maintenance level capable of complete repair of the support item is the depot level.
L -	Repair restricted to designated Specialized Repair Activity.
Z -	Non-repairable. No repair is authorized.
B -	No repair is authorized. The item may be reconditioned by adjusting, lubricating, etc., at the user level. No parts or special tools are procured for the maintenance of this item.

(3) **Recoverability code.** Recoverability codes are assigned to support items to indicate the disposition action on unserviceable items. The recoverability code is entered in the fifth position of the uniform SMR Code Format as follows-

Code	Explanation
Z -	Nonrepairable item. When unserviceable, condemn and dispose at the level indicated in the first digit of the maintenance code.
O -	Repairable item. When uneconomically repairable, condemn and dispose at organizational level.
F -	Repairable item. When uneconomically repairable, condemn and dispose at the direct support level.
H -	Repairable item. When uneconomically repairable, condemn and dispose at the general support level.
D -	Repairable item. When beyond lower level repair capability, return to depot. Condemnation and disposal not authorized below depot level.
L -	Repairable item. Repair, condemnation, and disposal not authorized below depot/Specialized Repair Activity level.
A -	Item requires special handling or condemnation procedures because of specific reasons (i.e., precious metal content, high dollar value, critical material or hazardous material).

b. Federal Stock Number. Indicates the Federal

stock number assigned to the item and will be used for requisitioning purposes.

c. Description. Indicates the Federal **item name** and a minimum description required to identify the item. The last line indicates the reference number followed by the applicable Federal Supply Code for Manufacturer (FSCM) in parentheses. The FSCM is used as an element in item identification to designate manufacturer or distributor or Government agency, etc., and is identified in SB 708-42.

d. Unit of Measure (U/M). Indicates the standard or basic quantity by which the listed item is used in performing the actual maintenance function. This measure is expressed by a two-character alphabetical abbreviation ; e.g., ea, in, pr, etc., and is the basis used to indicate quantities and allowances in subsequent columns. When the unit of measure differs from the unit of issue, the lowest unit of issue that will satisfy the required units of measure will be requisitioned.

e. Quantity Incorporated *in Unit*. This column indicates the quantity of the item used in the equipment.

f. 15-Day Organizational Maintenance Allowances.

(1) The repair parts indicated by an asterisk in the allowance column represent those authorized for use at the organizational category, and will be requisitioned on an "as required" basis, until stockage is based on demand in accordance with AR 710-2.

(2) Major Army commanders are authorized to approve reduction in the range of support items authorized for use in units within their commands. Recommendations for increase in range of items authorized for **use** will be forwarded to Commander, US Army Electronics Command, ATTN: AMSEL-MA-CR, Fort Monmouth, NJ., 07703.

(3) Allowance quantities are indicated in the special tools list section for special tools, TMDE, and other support equipment.

Allowances in GS column are for GS maintenance only.

(1) The repair parts indicated by asterisk entries in separate allowance columns for DS and GS represent those authorized for use at that category of maintenance to be requisitioned on an "as required" basis, until stockage is based on demand in accordance with AR 710-2.

(2) Allowance quantities are indicated in the special tool lists section for special tools, TMDE, and other support equipment.

h. 1-Year Allowances Per 100 Equipments | Contingency Planning Purposes. Col-

umn intentionally left blank.

i. Depot Maintenance Allowance Per 100 Equipments. This column indicates opposite the first appearance of each item the total quantity authorized for depot maintenance of 100 equipments.

j. Illustration. Not applicable.

1-4. Special Information

a. Usable **on codes** are included in column 3. **Uncoded items are applicable to all models. Identification** of the usable on codes used in this publication are -

Code	Used on
A6L	AB-127A/FR
A6M	AB-127B/FR
A6N	AB-127C/FR
A6O	AB-127D/FR

b. The following publication pertains to the equipments and its components:

**TM 11-5012 Antenna Towers AB-127A/FR
AB-127B/FR, AB-127C/FR,
and AB-U7D/FR**

a.. This manual contains one cross-reference index (sec VII) to be used to locate a repair part when either the Federal stock number or reference number (manufacturer's part number) is known. The first column in the index is prepared in numerical or alphanumeric sequence in ascending order. The reference numbers (manufacturer's part numbers) are listed immediately following the last listed Federal stock number in the index of Federal stock numbers.

b. When the Federal stock number or reference number is known, follow the procedures given in (1) and (2) below.

(1) Refer to the index of Federal stock numbers (sec VII), and locate the Federal stock number or reference number. The FSN and reference number are cross-referenced to the applicable figure and item number or reference designation.

(2) Refer to the repair parts list (sec III and V) and locate the figure number (col 7a-20P, 10a-34P) and item number or reference designation (col 7b-20P, 10b-34P) as noted in the FSN index.

c. When the figure and item number or reference designation are known, scrutinize columns 7a and 7b-20P and 10a and 10b-34P, of the repair parts list (sec III and V) until the item is located.

d. When the FSN, reference number, figure number, and item number are not known, scrutinize column 3 of the repair parts list (sec III and V), which

is arranged in alphabetical order.

1-6. Abbreviations

Not applicable.

1-7. Reporting of Equipment Publication Improvements

The reporting of errors, omissions, and recommenda-

tions for improving this publication by the individual user is encouraged. Reports should be submitted on DA Form 2028 (Recommended Changes to Publications) and forwarded direct to Commander, US Army Electronics Command, ATTN: AMSEL-MA-CR, Fort Monmouth, NJ., 07703.

SECTION III

TM11-5985-211-24P

(1) SMR CODE	(2) FEDERAL STOCK NUMBER	(3) DESCRIPTION REFERENCE NUMBER & MFR CODE USABLE ON CODE		(4) UNIT OF MEAS	(5) QTY. INC IN UNIT	(6) 15-DAY ORGANIZATIONAL MAINTENANCE ALW				(7) ILLUSTRATION	
						(a)	(b)	(c)	(d)	(a)	(b)
						1-5	6-20	21-50	51-100	FIGURE NO.	ITEM NO.
PAQZZ	4030-188-0535	ANCHOR, GUY NO-REF-DESIG. MILA377TYPE2CLAS+ SD (81349)		EA	6	*	*	*	*		
PAQZZ	5306-187-5253	ANCHOR ROD AH-7 NO-REF-DESIG SCD27411-12 (1800631)		EA	6	*	*	*	*		
PAQZZ	5920-309-5498	ARRESTER, LIGHTING NO-REF-DESIG SC82722W1THSC827827* 423 (80063)		EA	1	*	*	*	*		
PAQZZ	5985-224-7248	BASE, ANTENNA NO-REF-DESIG SC8274238 (80063)		EA	1	*	*	*	*		
PAQZZ	5306-206-4989	BOLT, HOOK NO-REF-DESIG SC827421 (80063)		EA	3	*	*	*	*		
PAQZZ	5306-550-2237	BOLT, MACHINE NO-REF-DESIG W/D NUT SO HEAD WRENCH DRIVE 3/4 IN -10NC-2 THD 4 IN LG FF8575TYPE1GRADE+ 5 (81348)	A60	EA	1	*	*	*	*		
PAQZZ	5306-579-1451	BOLT, MACHINE NO-REF-DESIG FFB571TYPEA1 (81340)	A6L, A6M	EA	1254	*	*	*	*		
PAQZZ	5306-579-1451	BOLT, MACHINE NC-REF-DESIG FFB571TYPEA1 (81348)	A6N	EA	987	*	*	*	*		
PAQZZ	5306-579-1451	BOLT, MACHINE NO-REF-DESIG FF8571TYPEA1 (81348)	A60	EA	993	*	*	*	*		
PAQZZ	5306-141-2870	OLT, MACHINE NO-REF-DESIG SCD25290-11 (80063)	A6L, A6M, A6N	EA	190	*	*	*	*		
PAQZZ	5306-019-1846	BOLT, MACHINE NO-REF-DESIG SCD27411-15 (80063)	A60	EA	187	*	*	*	*		
PAQZZ	5306-637-8791	BOLT, MACHINE NO-REF-DESIG FFB575TYPE 1GRADE* 1 (81348)	A6L, A6M, A6N	EA	3	*	*	*	*		
PAQZZ	5306-637-8791	BOLT, MACHINE NO-REF-DESIG FFB575TYPE 1GRADE* 1 (81348)	A60	EA	2	*	*	*	*		
PAQZZ	5306-543-5677	BOLT, MACHINE NO-REF-DESIG SCD27411-16 (80063)	A60	EA	12	*	*	*	*		
PAQZZ	5975-646-5896	CLAMP, ELECTRICAL NO-REF-DESIG A (84544)	A60	EA	2	*	*	*	*		
PAQZZ	4030-498-8041	CLAMP NO-REF-DESIG SCD27411-2 (80063)		EA	12	*	*	*	*		
PAQZZ	4030-527-9278	CLIP, WIRE ROPE NO-REF-DESIG G429 (02280)	A60	EA	12	*	*	*	*		
PAQZZ	4030-243-4439	CLIP, WIRE ROPE NO-REF-DESIG FFC450TYPE1CLASS* 2 (81348)		EA	24	*	*	*	*		
PAQZZ	5970-646-4731	INSULATOR, STRAIN NO-REF-DESIG KILL17918 (81349)	A60	EA	42	*	*	*	*		
PAQZZ	5970-583-1058	INSULATOR, STRAIN NO-REF-DESIG SCB27418-3 (80063)		EA	42	*	*	*	*		
PAQZZ	5310-531-1245	NUT, PLAIN, HEXAGON NO-REF-DESIG FFB571 (81348)		EA	12	*	*	*	*		
X80ZZ	4030-264-6500	NUT, PLAIN, HEXAGON NO-REF-DESIG SCD27411-19 (80063)	A6L, A6M, A6N	EA	3	*	*	*	*		
X80ZZ	4030-264-6500	NUT, PLAIN, HEXAGON NO-REF-DESIG SCD27411-19 (80063)	A60	EA	6	*	*	*	*		
PAQZZ	4030-264-6500	SHACKLE, ANCHOR NO-REF-DESIG SCD27411-5 (80063)	A6L, A6M, A6N	EA	12	*	*	*	*		
PAQZZ	4030-264-6500	SHACKLE, ANCHOR NO-REF-DESIG SCD27411-5 (80063)	A60	EA	12	*	*	*	*		
PAQZZ	4030-185-0489	SHACKLE, ANCHOR NO-REF-DESIG SCD27411-6 (80063)		EA	12	*	*	*	*		
PAQZZ	4030-266-0064	THIMBLE, GUY NO-REF-DESIG ACCOM 3/8 IN DIA WIRE ROPE 3/2 IN LG X 2 IN W X 1/2 IN THK G414-3-8 (75435)	A6L, A6M	EA	24	*	*	*	*		
PAQZZ	4030-266-0064	THIMBLE, GUY NO-REF-DESIG ACCOM 3/8 IN DIA WIRE ROPE 3/2 IN CC X 2 IN W X 1/2 IN THK G414-3-8 (75535)	A6N, A60	EA	24	*	*	*	*		
PAQZZ	5340-194-9860	TURNBUCKLE NO-REF-DESIG SCD27411-3 (80063)		EA	12	*	*	*	*		
PAQZZ	5310-012-0382	MASHER, LOCK NO-REF-DESIG SCD27411-21 (80063)	A6L, A6M, A6N	EA	1174	*	*	*	*		
PAQZZ	5310-012-0382	WASHER, LOCK NO-REF-DESIG SCD27411-21 (80063)	A6L, A6C, AbN	EA	1180	*	*	*	*		
PAQZZ	5310-543-5128	WASHER, LOCK NO-REF-DESIG SCD27411-23 (80063)		EA	12	*	*	*	*		
PAQZZ	4010-531-5079	WIRE, STRANDED STEEL NO-REF-DESIG 3-8X7 (80406)	A60	FT	2400	*	*	*	*		

SECTION V

TM11-5985-211-24P

(1) SMR CODE	(2) FEDERAL STOCK NUMBER	(3) DESCRIPTION REFERENCE NUMBER & MFR. CODE USABLE ON CODE		(4) UNIT OF MEAS	(5) QTY INC IN UNIT	(6) 30-DAY DS MAINT ALLOWANCE			(7) 30-DAY GS MAINT ALLOWANCE			(8) 1-YR ALW PER 100 EQUIP CNTGCT	(9) DEPOT MAINT ALW PER 100 EQUIP	(10) ILLUSTRATION	
						(a)	(b)	(c)	(a)	(b)	(c)			(a)	(b)
						1-20	21-50	51-100	1-20	21-50	51-100			FIGURE NO.	ITEM NO.
PAOZZ	4030-188-0535	ANCHOR GUY NO-REF-DESIG.. MILA377TYPE2CLAS@ SO (81349)		EA	6	*	*	*	*	*	*		5		
PAOZZ	5306-187-5253	ANCHOR ROD AH-7 NO-REF-DESIG. SC02 7411-12 (80063)		EA	6	*	*	*	*	*	*		5		
PAOZZ	5920-309-5498	ARRESTER, LIGHTING NO-REF-DESIG. SC82722w1 THCB27* 423 (80063)		EA	1	*	*	*	*	*	*		5		
PAOZZ	5985-224-7248	BASE, ANTENNA NO-REF-DESIG. SCB27423B (80063)		EA	1	*	*	*	*	*	*		3		
PAOZZ	5306-206-4989	BOLT, HOOK NO-REF-DESIG. SCB27421 (80063)		EA	3	*	*	*	*	*	*		2		
PAOZZ	5306-550-2237	BOLT, MACHINE NO-REF-DESIG W/O NUT SQ.. HEAD WRENCH DRIVE 3/4 IN -IONC-2 THO 4 IN LG FF8575TYPE1GRADE+ A60 5 (81348)		EA	1	*	*	*	*	*	*		2		
PAOZZ	5306-579-1451	BOLT, MACHINE NO-REF-DESIG. FFB571TYPEAL (81348) A6L,A6M		EA	1254	*	*	*	*	*	*		2		
PAOZZ	5306-579-1451	BOLT, MACHINE NO-REF-DESIG. FFB571TYPEAL (81348) A6N		EA	987	*	*	*	*	*	*		2		
PAOZZ	5306-579-1451	BOLT, MACHINE NO-REF-DESIG. FFB571TYPEAL (81348) A60		EA	993	*	*	*	*	*	*		2		
PAOZZ	5306-141-2870	BOLT, MACHINE NO-REF-DESIG. SCD25290-11 (80063) A6L,A6M,A6N		EA	190	*	*	*	*	*	*		2		
PAOZZ	5306-019-1846	BOLT, MACHINE NO-REF-DESIG. SUD27411-15 (80063) A60		EA	187	*	*	*	*	*	*		2		
PAOZZ	5306-637-8791	BOLT, MACHINE NO-REF-DESIG. FFB575TYPEGRADE* A6L,A6M,A6N A (81348)		EA	3	*	*	*	*	*	*		2		
PAOZZ	5306-637-8791	BOLT, MACHINE NO-REF-DESIG. FFB575TYPE1GRADE+ A60 1 (81348)		EA	2	*	*	*	*	*	*		2		
PAOZZ	5306-543-5677	BOLT, MACHINE NO-REF-DESIG. SCD27411-16 (80063) A60		EA	12	*	*	*	*	*	*		2		
PAOZZ	5975-646-5896	CLAMP ELECTRICAL NO-REF-DESIG. A (84544) A60		EA	2	*	*	*	*	*	*		3		
PAOZZ	4030-498-8041	CLAMP NO-REF-DESIG. SCD27411-2 (80063)		EA	12	*	*	*	*	*	*		3		
PAOZZ	4030-527-9278	CLIP, WIRE ROPE NO-REF-DESIG. G429 (02280) A60		EA	12	*	*	*	*	*	*		3		
PAOZZ	4030-243-4439	CLIP, WIRE ROPE NO-REF-DESIG. FFC450IYPICLASS@ 2 (181348)		EA	24	*	*	*	*	*	*		3		
PAOZZ	5970-646-4731	INSULATOR, STRAIN NU-REF-DESIG. A1L117918 (81349) A60		EA	42	*	*	*	*	*	*		2		
PAOZZ	5970-583-1058	INSULATOR, STRAIN NO-REF-DESIG. SCB27418-3 (80063)		EA	42	*	*	*	*	*	*		2		
PAOZZ	5310-531-1245	NUY, PLAIN, HEXAGON NO-REF-DESIG. FF8571 (81348)		EA	12	*	*	*	*	*	*		3		
XBOZZ	4030-264-6500	NUT PLAIN, HEXAGON NO-REF-DESIG. SC027411-19 (80063) A6L,A6M,A6N		EA	3										

SECTION VII

TM11-5985-211-24P

INDEX - FEDERAL STOCK NUMBER AND REFERENCE NUMBER
CROSS-REFERENCE TO FIGURE AND ITEM NUMBER

STOCK NUMBER	FIGURE NO.	ITEM NO.	STOCK NUMBER	FIGURE NO.	ITEM NO.
4010-531-5079			5306-550-2237		
4030-185-0489			5306-579-1451		
4030-188-0535			5306-637-8791		
4030-243-4439			5310-012-0382		
4030-264-6500			5310-531-1245		
4030-266-0064			5310-543-5128		
4030-498-8041			5340-194-9860		
4090-527-9278			5920-309-5498		
5306-019-1846			5970-583-1058		
5306-141-2870			5970-646-4731		
5306-187-5253			5975-646-5896		
5306-206-4989			5985-224-7248		
5306-543-5677					

REFERENCE NO.	MFR CODE	FIG. NO.	ITEM NO.	REFERENCE NO.	MFR CODE	FIG. NO.	ITEM NO.
	84544			SC0274238	80063		
FFB571	81348			SCD25290-11	80063		
FFB571TYPEA1	81348			SCD27411-12	80063		
FFB575TYPE1GRADE1	81348			SCD27411-15	80063		
FFB575TYPE1GRADE5	81348			SCD27411-16	80063		
FFC450TYPE1CLASS2	81348			SCD27411-19	80063		
G414-3-8	75535			SCD27411-2	80063		
G429	02280			SCD27411-21	80063		
MILA377TYPE2CLASSD	81349			SCD27411-23	80063		
M1L117918	81349			SCD27411-3	80063		
SCB2722WITHSCB27423	80063			SCD27411-5	80063		
SCB27418-3	80063			SCD27411-6	80063		
SCB27421	80063			3-8X7	80406		

By Order of the Secretary of the Army:

CREIGHTON W. ABRAMS
General, United States Army
Chief of Staff

Official:

VERNE L. BOWERS
Major General, United States Army
The Adjutant General

Distribution:

Active Army:

CNGB (1)	USAERDAA (1)
TSG(1)	USAERDAW (1)
ACSC/E(2)	Army Dep (1) except
USAMB (10)	LBAD (10)
USAARENBD (1)	SAAD (30)
USASA (2)	TOAD (14)
TRADOC (2)	ATAD (10)
AMC (2)	USA Dep (1)
MICOM (1)	Sig Sec USA Dep (2)
TECOM (2)	Sig Dep (2)
ARADCOM (2)	Sig FLDMS (1)
ARADCOM Rgn (1)	Ft Richardson (ECOM Ofc) (1)
OS Maj Comd (1)	Units org under fol TOE:
USACC (2)	(1 copy each unit)
HISA (Ft Monmouth) (18)	11-16
Armies (1)	11-18
USASESS (5)	11-117
SvcColleges (1)	11-302
Fort Huachuca (5)	11-500(AA-AC)
WSMR (1)	29-134
Fort Carson(5)	29-136

NG: None

USAR: None

For explanation of abbreviations used, see AR 310-50.

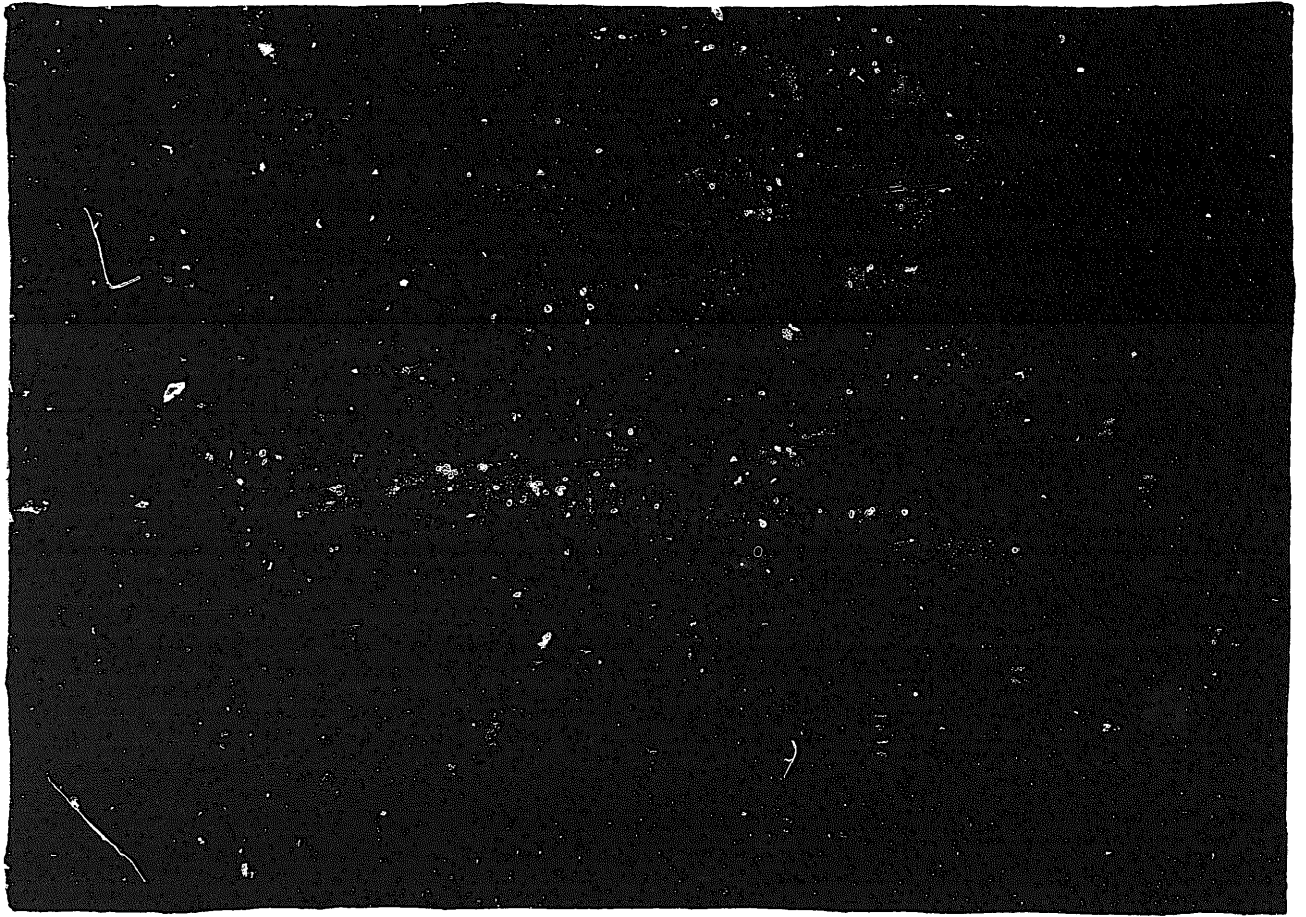
*U.S.GOVERNMENT PRINTING OFFICE: 1974-768117/1478

END

12-08-82

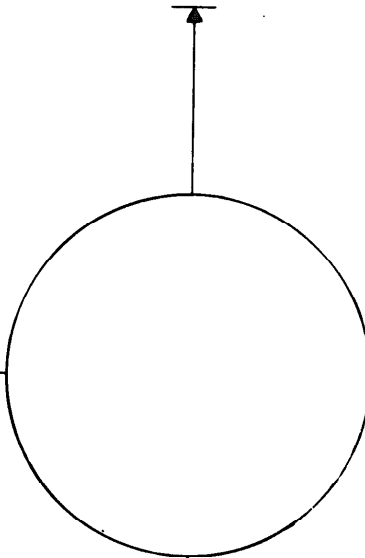
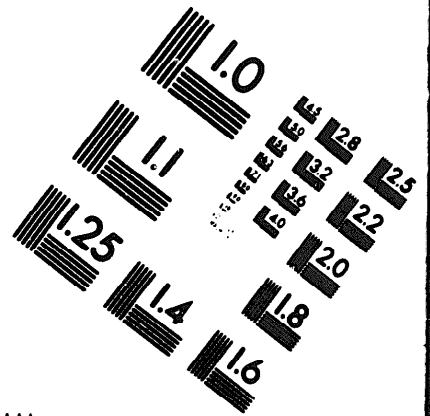
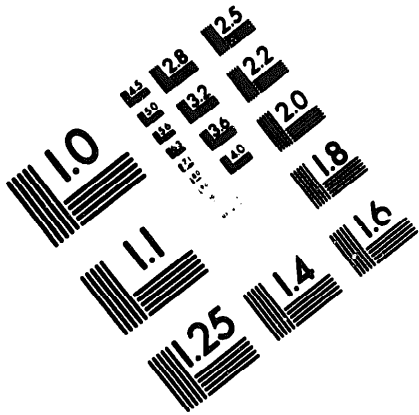
DATE





DEPARTMENT OF THE ARMY

MICROFORM
TEST TARGET



150 MM

1.0 mm (e= .81 mm)

ABCDEF GHIJKLMNOPQRSTUVWXYZ1234567890
abcdefghijklmnopqrstuvwxyz\$%&/'%# 1/2 1/4 3/4 —=+ x&@*

1.5 mm (e= 1.09 mm)

ABCDEF GHIJKLMNOPQRSTUVWXYZ1234567890
abcdefghijklmnopqrstuvwxyz\$%&/'%# 1/2 1/4 3/4 —=+ x&@*

2.0 mm (e= 1.37 mm)

ABCDEF GHIJKLMNOPQRSTUVWXYZ
abcdefghijklmnopqrstuvwxyz
1234567890\$%&/'%# 1/2 1/4 3/4 —=+ x&@*

2.5 mm (e= 1.77 mm)

ABCDEF GHIJKLMNOPQRSTUVWXYZ
abcdefghijklmnopqrstuvwxyz
1234567890\$%&/'%# 1/2 1/4 3/4 —=+ x&@*

1.0 mm (e= .81 mm)

ABCDEF GHIJKLMNOPQRSTUVWXYZ1234567890
abcdefghijklmnopqrstuvwxyz\$%&/'%# 1/2 1/4 3/4 —=+ x&@*

1.5 mm (e= 1.09 mm)

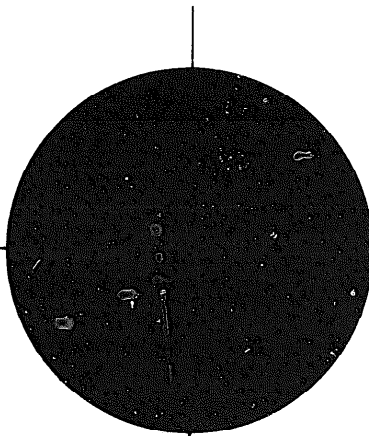
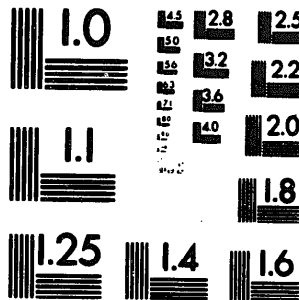
ABCDEF GHIJKLMNOPQRSTUVWXYZ1234567890
abcdefghijklmnopqrstuvwxyz\$%&/'%# 1/2 1/4 3/4 —=+ x&@*

2.0 mm (e= 1.37 mm)

ABCDEF GHIJKLMNOPQRSTUVWXYZ
abcdefghijklmnopqrstuvwxyz
1234567890\$%&/'%# 1/2 1/4 3/4 —=+ x&@*

2.5 mm (e= 1.77 mm)

ABCDEF GHIJKLMNOPQRSTUVWXYZ
abcdefghijklmnopqrstuvwxyz
1234567890\$%&/'%# 1/2 1/4 3/4 —=+ x&@*



200 MM

250 MM

